

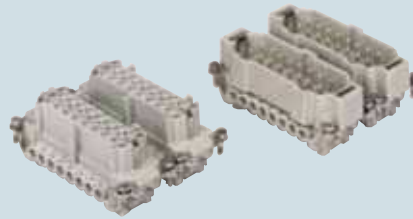
enclosures: size "77.62"

standard page: 226 ÷ 229

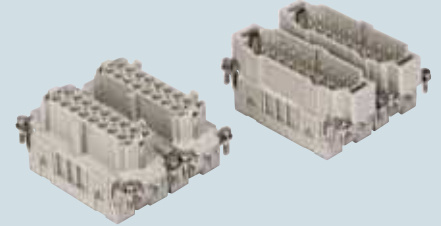
aggressive environments page: 230

- features according to EN 61984:
- 16A 500V 6kV 3**
- UL, CSA, CCC, GL certified
- for maximum current load, see the insert load curve section on page 31

inserts,
screw terminal connections



inserts,
spring terminal connections



description	part No.	part No.	part No.	part No.
indirect, with plate 1) female inserts, No. (1÷16) and (17÷32) male inserts, No. (1÷16) and (17÷32)	CNEF 16 T CNEM 16 T	CNEF 16 TN CNEM 16 TN		
direct, without plate 2) female inserts, No. (1÷16) and (17÷32) male inserts, No. (1÷16) and (17÷32)	CNEF 16 TX CNEM 16 TX	CNEF 16 TXN CNEM 16 TXN		
spring terminal female inserts, No. (1÷16) and (17÷32) male inserts, No. (1÷16) and (17÷32)			CSEF 16 CSEM 16	CSEF 16 N CSEM 16 N

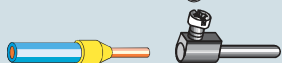
- 1) for non-prepared conductors
2) for bush terminal conductors

* CNE...RY version without plastic wire insertion guide cover available on request.

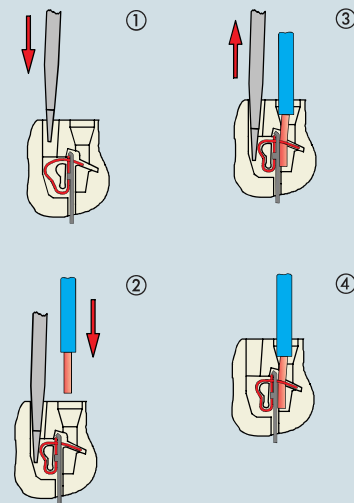
CNE ...



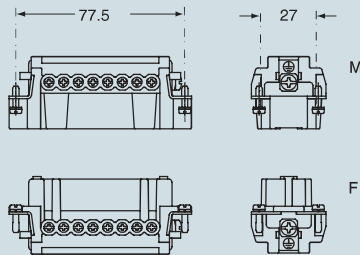
CNE ... X



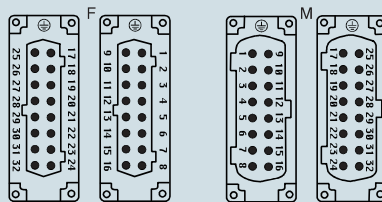
connection with spring terminal



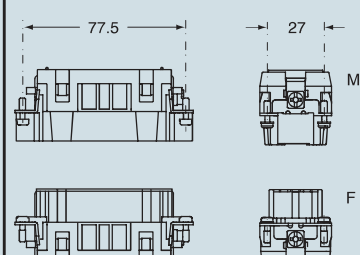
dimensions in mm



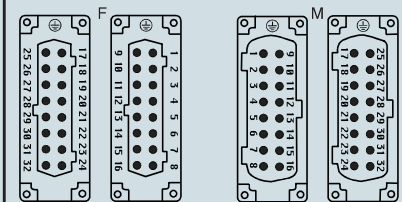
contacts side (front view)



dimensions in mm



contacts side (front view)



- inserts with plate, for section conductors:
0.5 ÷ 2.5 mm² - AWG 20 ÷ 14
- inserts without plate, for section conductors:
0.25 ÷ 2.5 mm² - AWG 24 ÷ 14
- torsion couple recommended for conductor fastening screws and stripping length see section feature of inserts on page 13

- inserts for section conductors:
0.14 ÷ 2.5 mm² - AWG 26 ÷ 14
- stripping length see section feature of inserts on page 13

dimensions indicated are not binding and may be changed without notice